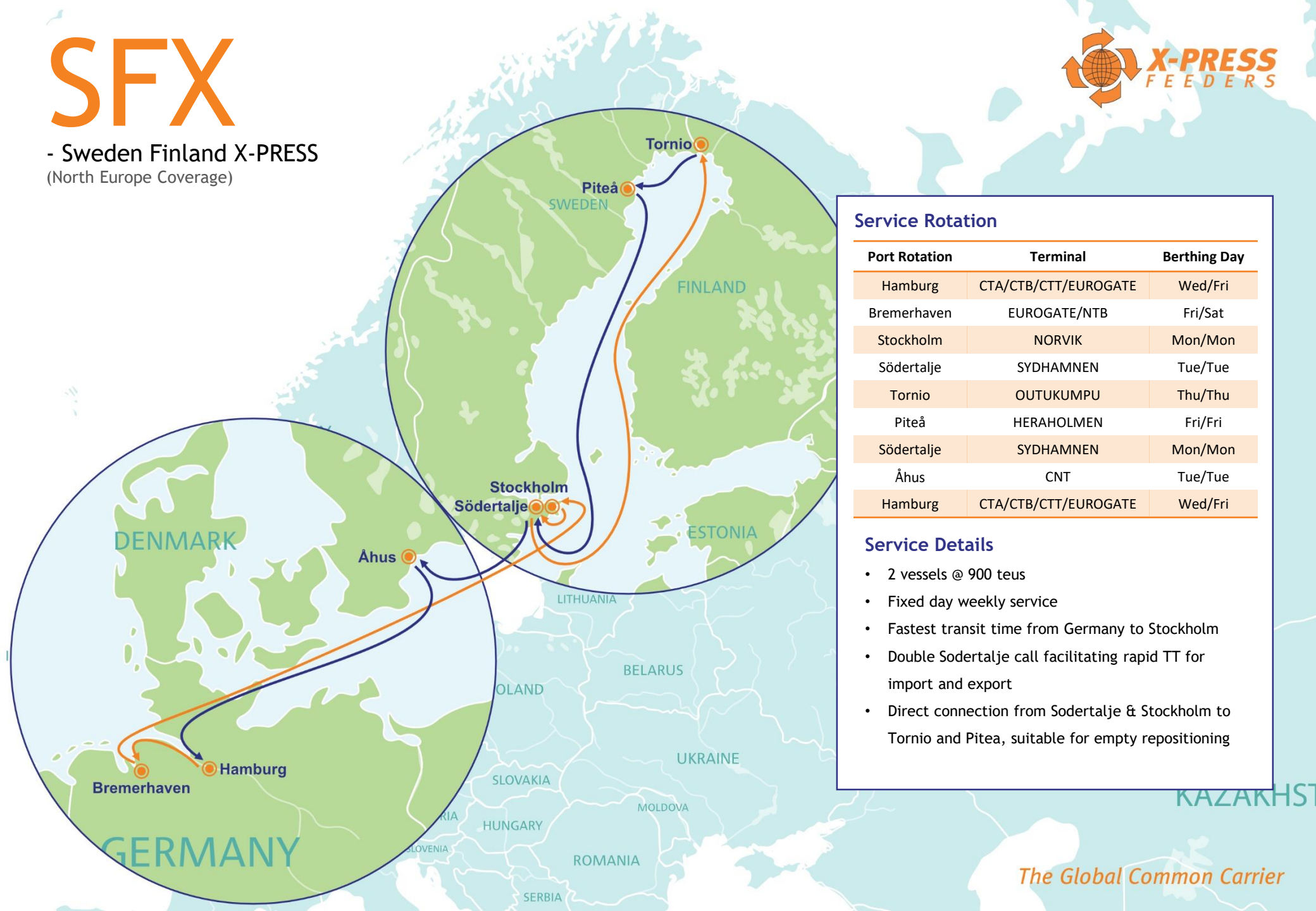


# SFX

- Sweden Finland X-PRESS  
(North Europe Coverage)



## Service Rotation

Port Rotation	Terminal	Berthing Day
Hamburg	CTA/CTB/CTT/EUROGATE	Wed/Fri
Bremerhaven	EUROGATE/NTB	Fri/Sat
Stockholm	NORVIK	Mon/Mon
Södertälje	SYDHAMNEN	Tue/Tue
Tornio	OUTUKUMPU	Thu/Thu
Piteå	HERAHOLMEN	Fri/Fri
Södertälje	SYDHAMNEN	Mon/Mon
Åhus	CNT	Tue/Tue
Hamburg	CTA/CTB/CTT/EUROGATE	Wed/Fri

## Service Details

- 2 vessels @ 900 teus
- Fixed day weekly service
- Fastest transit time from Germany to Stockholm
- Double Sodertälje call facilitating rapid TT for import and export
- Direct connection from Sodertälje & Stockholm to Tornio and Piteå, suitable for empty repositioning

# SFX - Sweden Finland X-PRESS (North Europe Coverage)

POD \ POL	Hamburg	Bremerhaven	Stockholm	Södertälje Import	Tornio	Piteå	Södertälje Export	Åhus
Hamburg		13	10	x	7	6	3	2
Bremerhaven	1		11	x	8	7	4	3
Stockholm	4	3		x	11	12	7	6
Södertälje	5	4	1		x	x	x	7
Tornio	7	6	3	2		13	11	10
Piteå	8	7	4	1	1		x	10
Södertälje	x	x	x	x	4	3		13
Åhus	12	11	8	x	5	4	1	