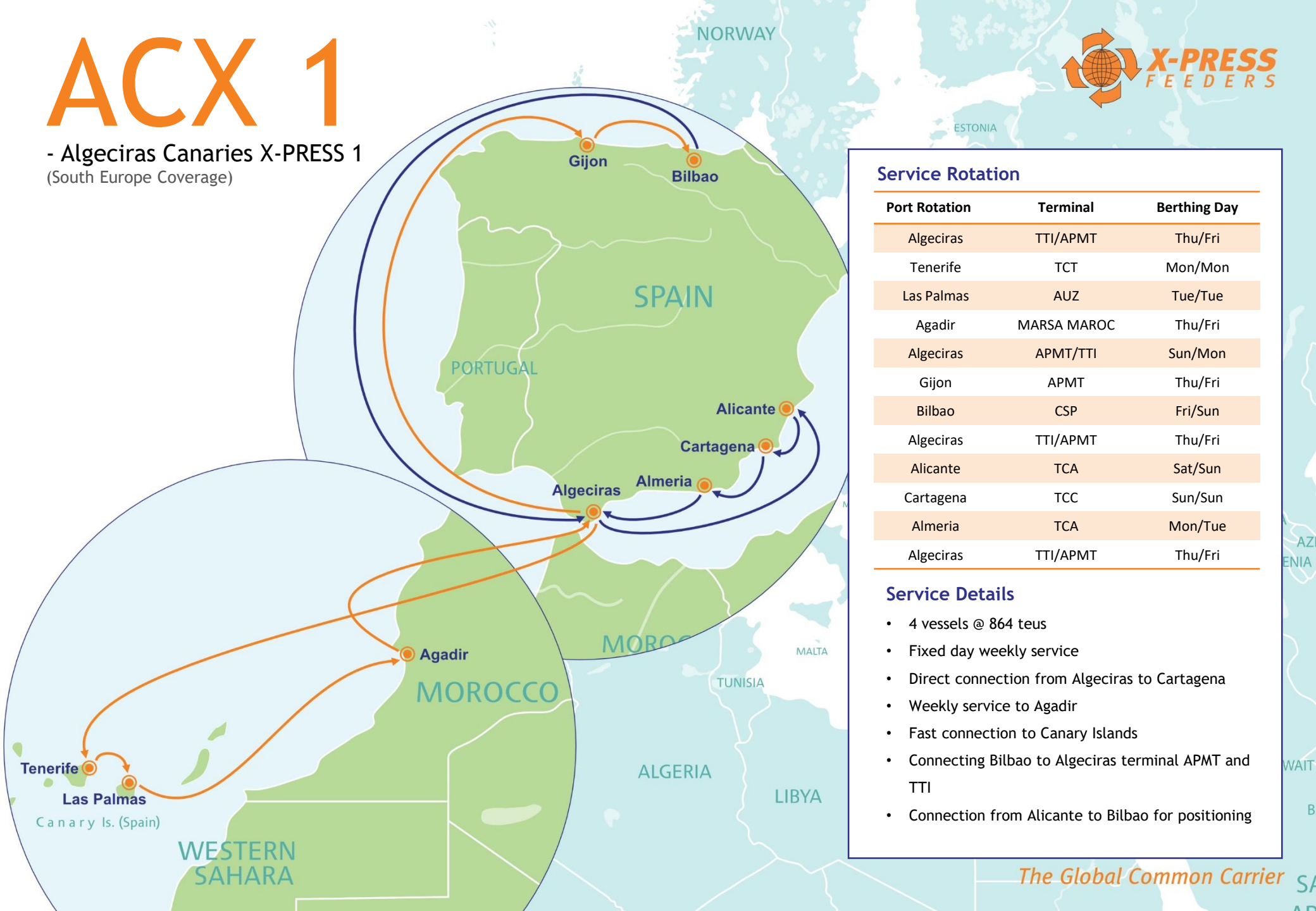


ACX 1

- Algeciras Canarias X-PRESS 1
(South Europe Coverage)



Service Rotation

| Port Rotation | Terminal | Berthing Day |
|---------------|-------------|--------------|
| Algeciras | TTI/APMT | Thu/Fri |
| Tenerife | TCT | Mon/Mon |
| Las Palmas | AUZ | Tue/Tue |
| Agadir | MARSA MAROC | Thu/Fri |
| Algeciras | APMT/TTI | Sun/Mon |
| Gijon | APMT | Thu/Fri |
| Bilbao | CSP | Fri/Sun |
| Algeciras | TTI/APMT | Thu/Fri |
| Alicante | TCA | Sat/Sun |
| Cartagena | TCC | Sun/Sun |
| Almeria | TCA | Mon/Tue |
| Algeciras | TTI/APMT | Thu/Fri |

Service Details

- 4 vessels @ 864 teus
- Fixed day weekly service
- Direct connection from Algeciras to Cartagena
- Weekly service to Agadir
- Fast connection to Canary Islands
- Connecting Bilbao to Algeciras terminal APMT and TTI
- Connection from Alicante to Bilbao for positioning

ACX 1 - Algeciras Canarias X-PRESS 1 (South Europe Coverage)

| POD \ POL | Algeciras | Tenerife | Las Palmas | Agadir | Gijón | Bilbao | Alicante | Cartagena | Almeria |
|------------|-----------|----------|------------|--------|-------|--------|----------|-----------|---------|
| Algeciras | | 7 | 6 | 4 | 6 | 3 | 5 | 4 | 2 |
| Tenerife | 3 | | 27 | 24 | 17 | 14 | 9 | 6 | 7 |
| Las Palmas | 4 | 1 | | 25 | 18 | 15 | 10 | 7 | 8 |
| Agadir | 6 | 3 | 2 | | 18 | 17 | 12 | 8 | 10 |
| Gijón | 3 | 11 | 10 | 9 | | 24 | 18 | 17 | 16 |
| Bilbao | 4 | 12 | 11 | 10 | 1 | | 21 | 20 | 19 |
| Alicante | 1 | 19 | 18 | 15 | 9 | 5 | | 27 | 26 |
| Cartagena | 2 | 20 | 19 | 16 | 10 | 6 | 1 | | 27 |
| Almeria | 3 | 21 | 20 | 17 | 11 | 7 | 2 | 1 | |